

2022 SCOUT 330 LXF - SCOUT BOATS



Builder:

[SCOUT BOATS](#)

Year Built:

2022

Model:

330 LXF

Price:

[See on website](#)

Location:

North Miami, United States

Max Speed:

0 Knots (0 MPH)

LOA:

33' 0" (10.06 mm)

Beam:

10' 0" (3.05 mm)

Min Draft:

- (0 mm)

Max Draft:

- (0 mm)

Cruising Speed:

0 Knots (0 MPH)

TABLE OF CONTENTS

Overview	4
Specifications	5
Basic Information	5
Dimensions	5
Speed, Capacities and Weight	5
Accommodations	6
Hull and Deck Information	6
Gallery	7
Contacts	24

OVERVIEW

2022 Scout 330 LXF

Why endure a lengthy 18-month wait for a brand-new Scout 330 priced over \$600K when you can take the helm of this nearly new model tomorrow? With three years remaining on the full warranty, this yacht is currently located in North Miami, FL. Reach out for further details or to arrange a convenient "any day" viewing.

A 15,000 lbs. boat lift is available for inclusion if desired, as a new lift is being installed to replace it.

Equipped with twin Mercury 400 Verado engines featuring Joystick Piloting (JPO) and only 45 hours of use, this vessel is in pristine condition and has just undergone a fresh detailing. It has been lightly used, never left in the water overnight, and has not been fished; it served as a real estate touring boat on the ICW. The yacht has been stored on a lift behind the owner's residence, covered with a full boat cover, and boasts a Diamond Tech Ceramic Hull coating inside and out.

The full hull is a stunning Midnight Blue, complemented by dual Garmin Display 8612 XVS and a transducer. Additional features include underwater lights, an electric fiberglass sunshade, cranking outriggers, and a 12V air-conditioned cabin that comfortably sleeps two, complete with a full head, shower, and sink. Other amenities include a Lumitec light bar, windshield wiper, bow rod/cup holder, and an electric forward dinette table.

The Scout 330 LXF is a luxurious, high-performance center console yacht designed for both avid fishing and leisurely cruising. Measuring 33 feet in length with a 10-foot beam, it provides ample space for diving, fishing, and entertaining.

Powered by twin Mercury 400 Verado outboard engines, this yacht delivers impressive power and speed for any aquatic adventure. Its advanced hull

design and wide beam ensure exceptional stability and seaworthiness, effortlessly navigating even the most challenging offshore conditions.

The cockpit is tailored for serious anglers, featuring generous rod storage, a livewell, and multiple large fish boxes. The T-top offers ample shade and protection from the elements, while the comfortable seating and state-of-the-art electronics make long days on the water a pleasure.

Beyond its fishing capabilities, the 330 LXF is equipped with luxurious amenities for enjoyable cruising. The cabin includes a full head and galley, along with cozy sleeping arrangements for two. The expansive cockpit and bow areas are ideal for entertaining guests and soaking in the stunning surroundings.

In summary, the Scout 330 LXF stands out as an extraordinary option for those seeking a versatile, high-performance yacht that excels in fishing, cruising, or simply enjoying a day on the water with friends and family. With its cutting-edge features and opulent amenities, this yacht is sure to captivate even the most discerning boating aficionados. Explore yacht sales in the current boat location and seize the opportunity to buy a yacht that embodies luxury and adventure.

SPECIFICATIONS

Basic Information

Category:
Motor yachts

Sub category:

Model Year:
2022

Year Built:
2022

Country:
United States

Dimensions

LOA:
33' 0" (10.06 mm)

Min Draft:
- (0 mm)

Beam:
10

Max Draft:
- (0 mm)

Speed, Capacities and Weight

Cruise Speed:
0 Knots (0 MPH)

Cruise Speed Range:
0 Kts.

Max Speed:
0 Knots (0 MPH)

Max Speed Range:
0 Kts.

Gross Tonnage:
0 Pounds

Water Capacity:
22 Gallons.

Holding Tank:
0 Gallons

Fuel Capacity:
265 Gallons

Accommodations

Total Cabins:

—

Total Berths:

—

Sleeps:

0

Total Heads:

1

Crew Cabin:

0

Crew Berths:

0

Crew Heads:

—

Hull and Deck Information

Hull Material:

N/A

Deck Material:

N/A

Hull Configuration:

N/A

Hull Designer:

N/A

Interior Designer:

N/A

Engine Information

Engines:

2

Manufacturer:

Mercury

Engine Type:

Outboard

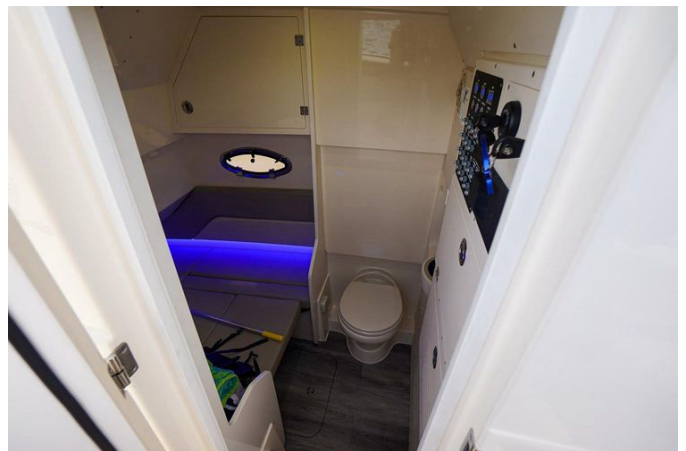
Fuel Type:

Gas

GALLERY













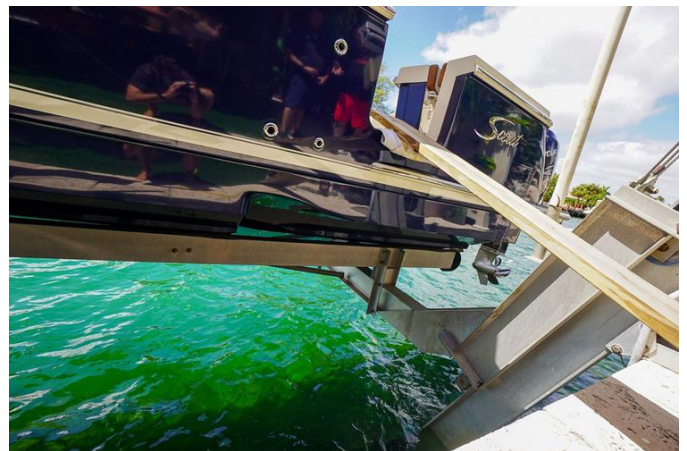


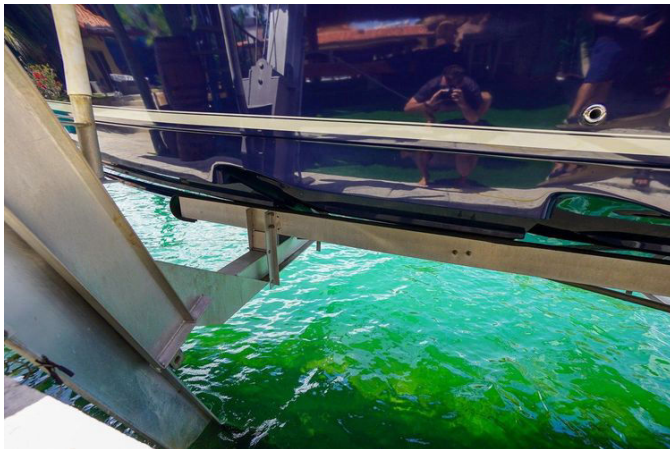




















CONTACTS

Shestakov Yacht Sales is a brokerage company specializing in the sale and service of yachts worldwide. The company offers services for buying and selling both new and used motor yachts, sailing vessels, and luxury superyachts. They also provide yacht registration, insurance, technical maintenance, crew selection, and charter organization services across the U.S., Canada, Latin America, the Caribbean, and the Bahamas.

The founder and lead broker of the company is Andrey Shestakov, a licensed and certified expert with extensive experience in marine engineering and shipbuilding.

The company has an extensive network of partnerships with major yacht manufacturers worldwide and provides services in multiple languages, including Russian, Ukrainian, Spanish, and English. The office is in Dania Beach, Florida, USA.

For more information and to view available yachts, you can visit the company's official website: <https://shestakovyachtsales.com>

Contact details

Phone: +1(954)274-4435

Email: andrey@shestakovyachtsales.com

Address



Harbour Towne Marina, 850 NE 3rd St,
STE 213,
Dania, FL 33004