

LIVING WITH E'S - MARLOW YACHTS



Builder:

[MARLOW YACHTS](#)

Year Built:

2016

Model:

58E

Price:

[See on website](#)

Location:

Fort Lauderdale, United States

Max Speed:

17 Knots (19.56 MPH)

LOA:

58' 0" (17.68 mm)

Beam:

18' 0" (5.64 mm)

Min Draft:

15' 10" (4.8333 mm)

Max Draft:

15' 10" (4.8333 mm)

Cruising Speed:

11.5 Knots (13.23 MPH)

TABLE OF CONTENTS

Overview **3**

Specifications **4**

 Basic Information 4

 Dimensions 4

 Speed, Capacities and Weight 4

 Accommodations 5

 Hull and Deck Information 5

Gallery **6**

Contacts **19**

OVERVIEW

Preliminary images were captured on July 24th. The owners are presently relishing their time aboard "Living With E's" in the stunning Bahamas, with plans for her return to Fort Lauderdale in the first week of August. A comprehensive video tour and professional photography session are arranged for her arrival.

"Living With E's" stands as a remarkable representation of the esteemed Marlow 58E Explorer. Crafted to meet the desires of a seasoned yachtsman who valued both comfort and safety, no detail was overlooked in her design and ongoing upkeep. The current owner has upheld this exceptional standard, ensuring she remains in pristine condition. This yacht for sale features a highly desirable configuration with three luxurious staterooms and two heads, along with fully equipped crew accommodations. Thanks to Marlow's innovative composite technology, the interior is impressively spacious while maintaining a low center of gravity. Combined with her Naiad Stabilizers, she offers unparalleled comfort and seaworthiness, making her a prime candidate for those looking to buy a yacht. Explore yacht sales in the current boat location and seize the opportunity to own this exquisite vessel.

SPECIFICATIONS

Basic Information

Category:
Motor yachts

Sub category:
Motor Yacht

Model Year:
2016

Year Built:
2016

Country:
United States

Dimensions

LOA:
58' 0" (17.68 mm)

Min Draft:
15' 10" (4.8333 mm)

Beam:
18

Max Draft:
15' 10" (15.857 mm)

Speed, Capacities and Weight

Cruise Speed:
11.5 Knots (13.23 MPH)

Cruise Speed Range:
0 Kts.

Max Speed:
17 Knots (19.56 MPH)

Max Speed Range:
0 Kts.

Gross Tonnage:
0 Pounds

Water Capacity:
320 Gallons.

Holding Tank:
0 Gallons

Fuel Capacity:
1500 Gallons

Accommodations

Total Cabins:

—

Total Berths:

—

Sleeps:

0

Total Heads:

3

Crew Cabin:

0

Crew Berths:

0

Crew Heads:

—

Hull and Deck Information

Hull Material:

Fiberglass and Plastic Yachts

Deck Material:

Composite

Hull Configuration:

N/A

Hull Designer:

N/A

Interior Designer:

N/A

Engine Information

Engines:

2

Manufacturer:

Cummins

Engine Type:

Inboard

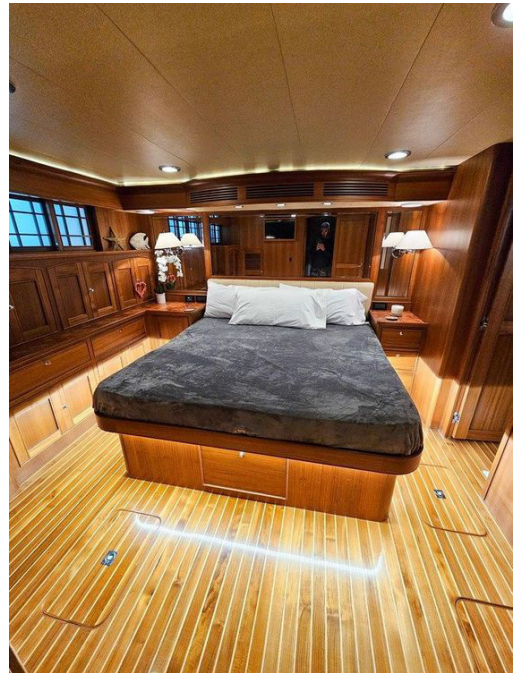
Fuel Type:

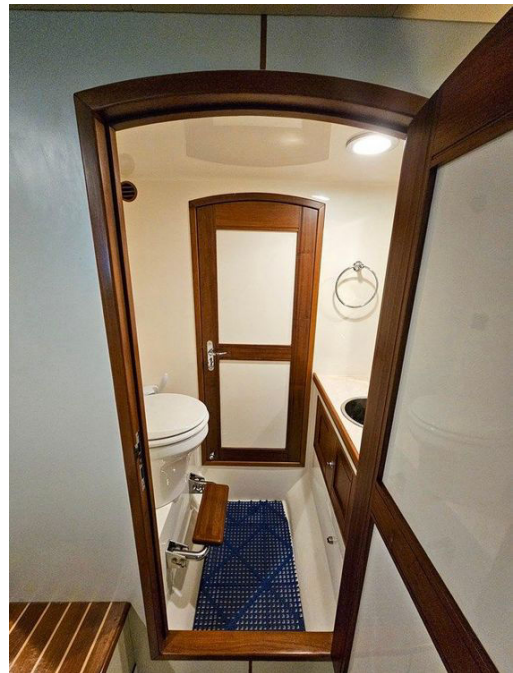
Diesel

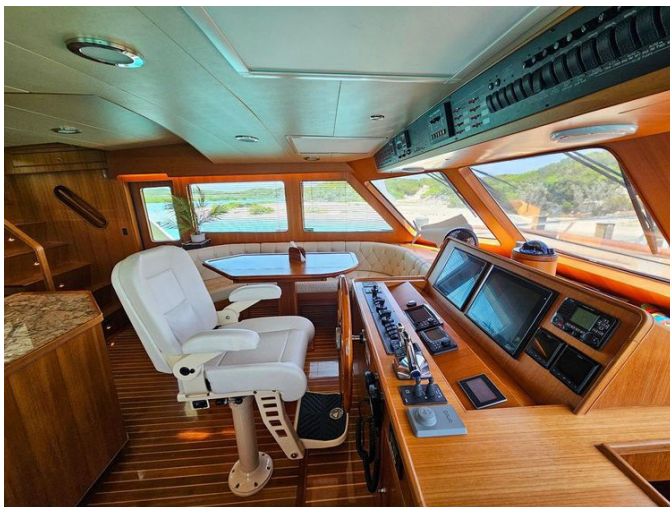
GALLERY





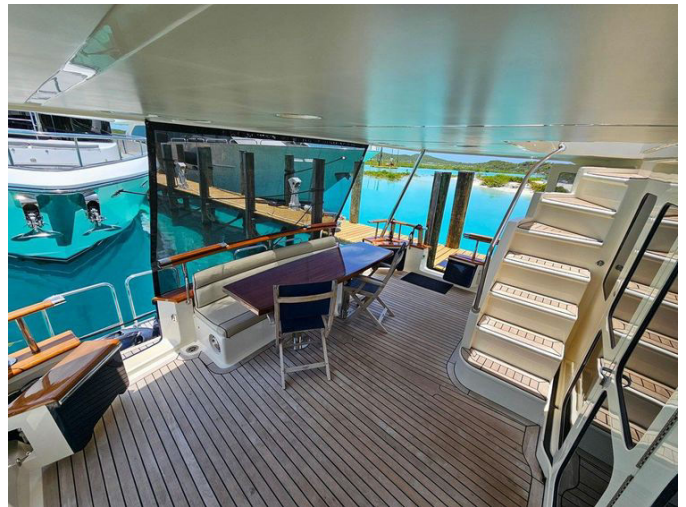






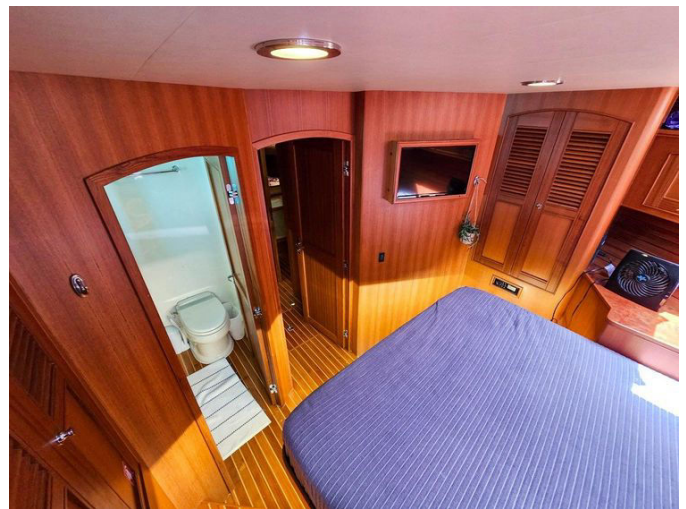
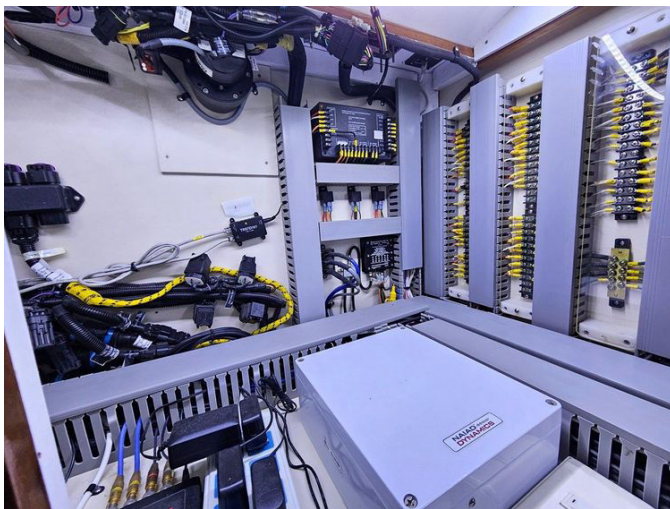


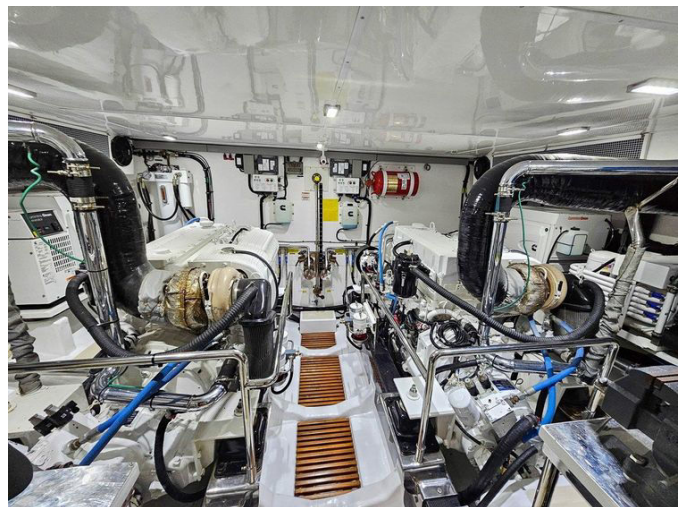














CONTACTS

Shestakov Yacht Sales is a brokerage company specializing in the sale and service of yachts worldwide. The company offers services for buying and selling both new and used motor yachts, sailing vessels, and luxury superyachts. They also provide yacht registration, insurance, technical maintenance, crew selection, and charter organization services across the U.S., Canada, Latin America, the Caribbean, and the Bahamas.

The founder and lead broker of the company is Andrey Shestakov, a licensed and certified expert with extensive experience in marine engineering and shipbuilding.

The company has an extensive network of partnerships with major yacht manufacturers worldwide and provides services in multiple languages, including Russian, Ukrainian, Spanish, and English. The office is in Dania Beach, Florida, USA.

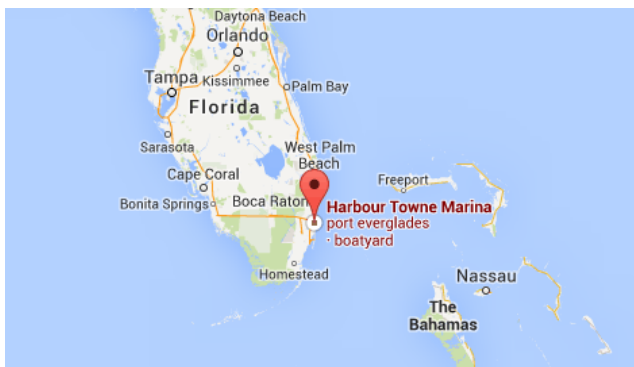
For more information and to view available yachts, you can visit the company's official website: <https://shestakovyachtsales.com>

Contact details

Phone: +1(954)274-4435

Email: andrey@shestakovyachtsales.com

Address



Harbour Towne Marina, 850 NE 3rd St,
STE 213,
Dania, FL 33004